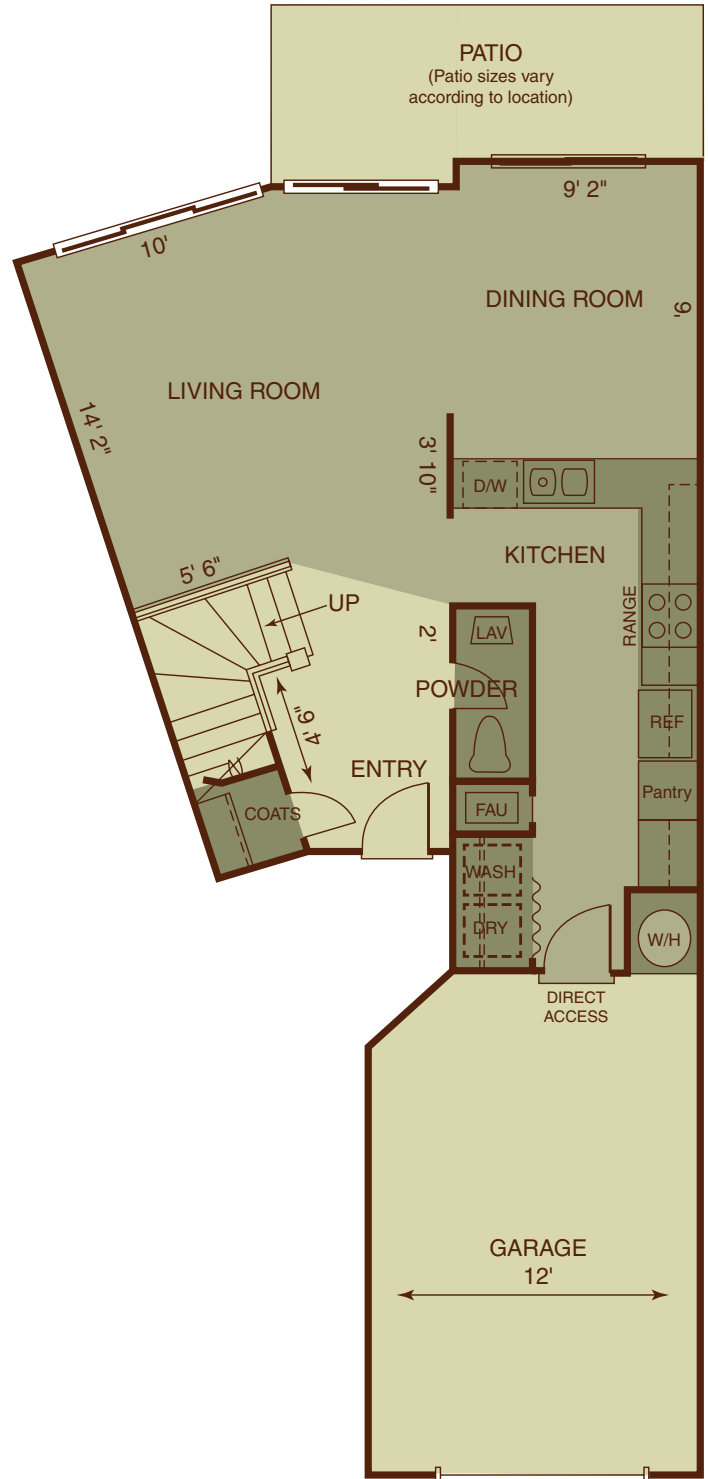
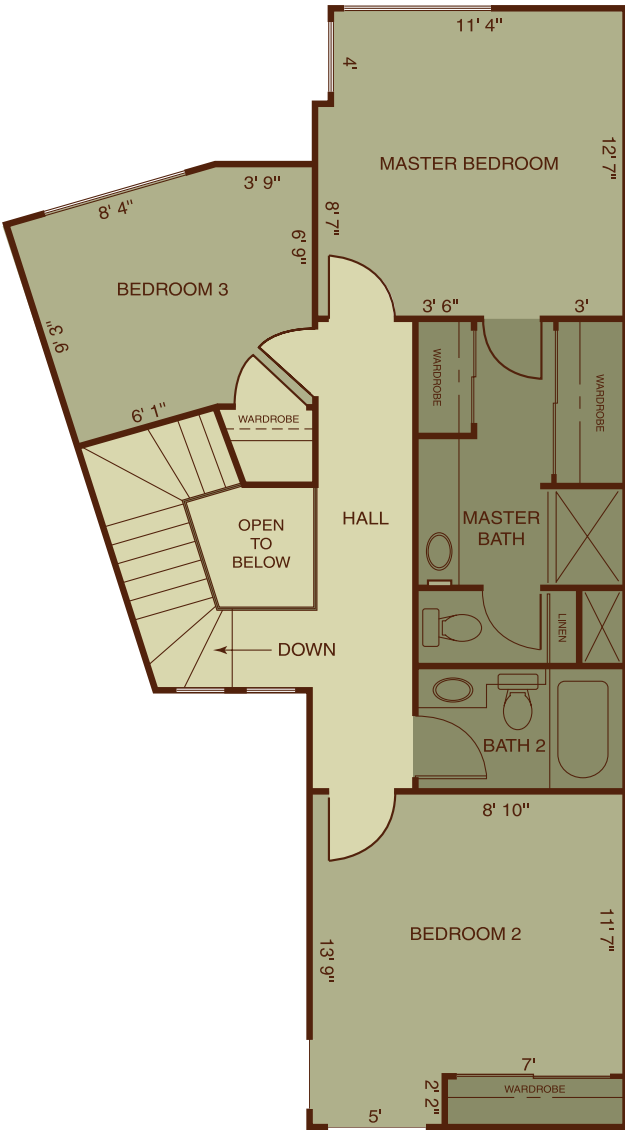


Villas Plan 5

# Manchester

1,392 Sq. Ft. \*

- Two stories of modern living space
- Features three bedrooms, two and a half baths
- Washer/Dryer Hookups (gas or electric)
- Enclosed one-car garage with opener



\*All measurements and square footage are approximate.

Luxury Apartment Homes

1501 Golf Club Drive Upland, California 91784 (909) 946-6877 www.ccvillasandterrace.com 16th Street and Tanglewood Avenue

