

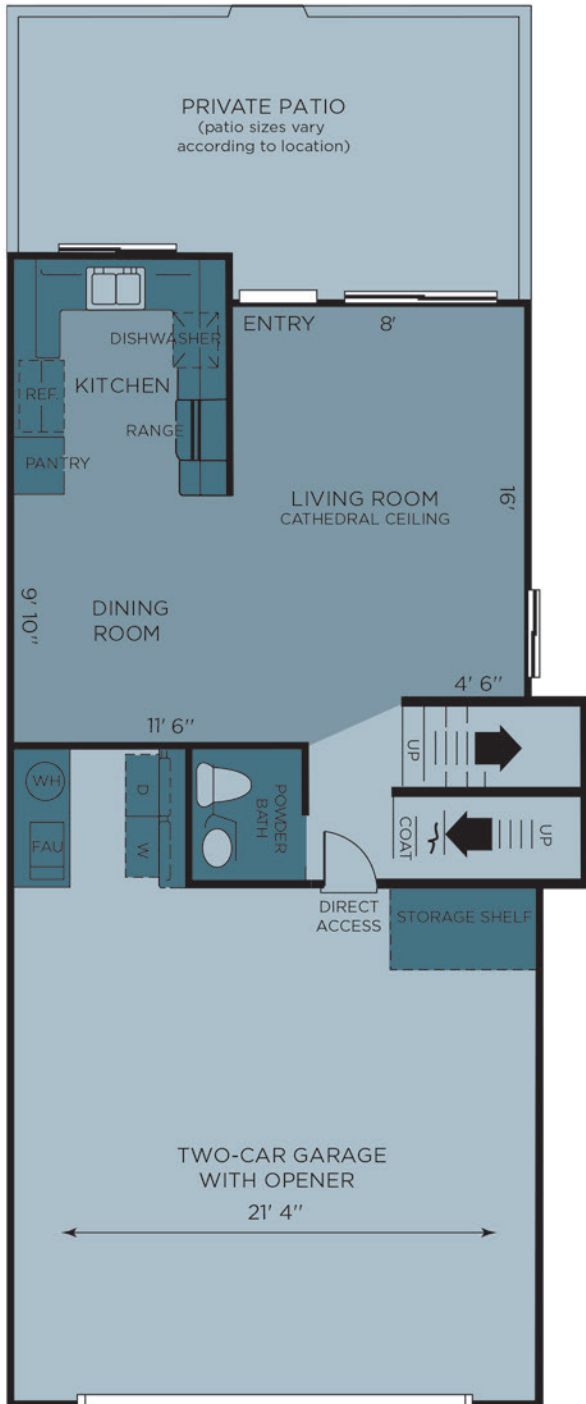


LUXURY APARTMENT HOMES

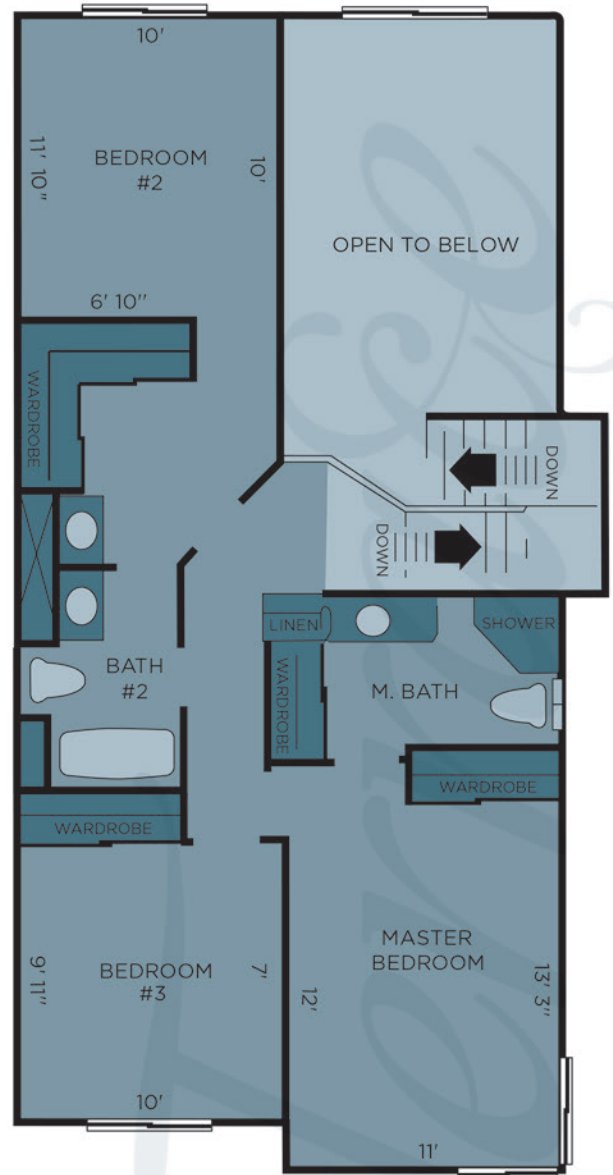
Terrace Plan D

Davenport
1,275 Sq. Ft.*

- Two stories of modern living space
- Features three bedrooms, two and a half baths
 - Washer/dryer hookups (gas)
- Enclosed two-car garage with opener



SECOND FLOOR



*All measurements and square footage are approximate.

LUXURY APARTMENT HOMES

LEASING OFFICE | 1501 Golf Club Drive, Upland, California 91784 | P: 909.946.6877 | CCVillasandTerrace.com

